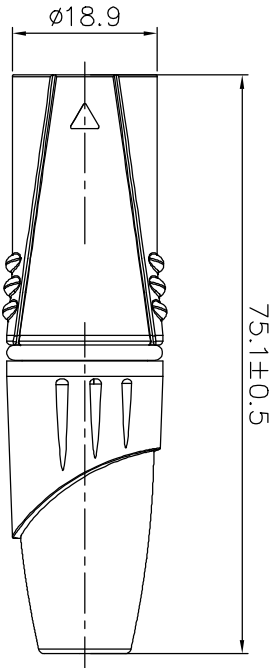
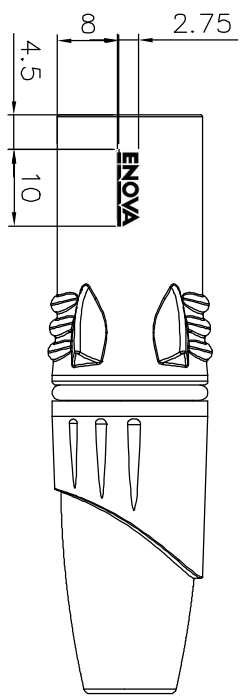
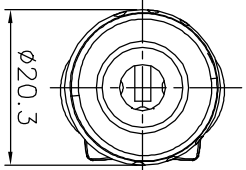
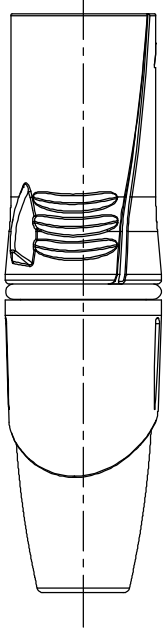
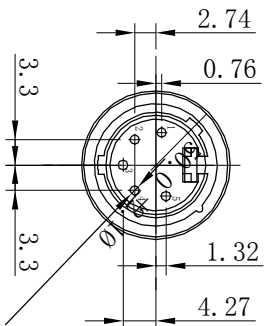
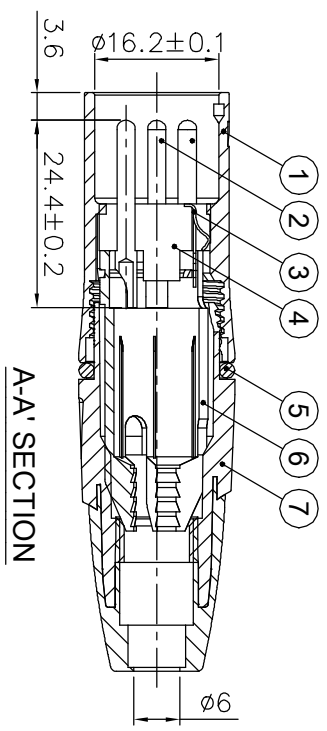


REVISONS
 DESCRIPTION \ PER REQUEST \ DATE

ISS	ZONE	DESCRIPTION \ PER REQUEST \ DATE
V	OPEN	Open drawings to customers



Notes:
 1. Remove O-ring used for cable O.D.: 3.3~4.8mm,
 Standard connector used for cable O.D.: 5.0~7mm



7	CAP+BOOT	PA6+TPR	BK+GY	1	
6	CABLE CLAMP	POM	WHITE	1	
5	O-RING	SILICON	BLACK	1	
4	INSULATOR	PA	BLACK	1	
3	Terminal	H62	TIN	1	
2	PIN	H59-1	SILVER	5	
1	DIE CAST SHELL	ZZnAL4-1	Electro coating black	1	
NO.	DESCRIPTION	MATERIAL	FINISH	Q'TY	DRAWING NO.

DIMENSIONS ARE IN MILLIMETERS UNLESS OTHERWISE SPECIFIED		APPROVED	DATE
TOLERANCES		CHECKED	DATE
ANGLES = ±5°		DRAWN	DATE
UP TO 6 = ±0.2		HAONANHU	2019-8-20
6-40 = ±0.4		FILE NO.	
40-120 = ±0.6		THIRD_ANGLE	
120-315 = ±1		SCALE	1/1
ABOVE 315 = ±1.6		ERP LINK:	

Connector Distribution GmbH		PART NO.	XL25MB	REV.	A1
5PIN XLR MALE CONNECTOR					